

Discovering metals underneath caliche covered areas

Darryl Lindsay, PhD, PGeo
Gerente de Desarrollo de Negocios Metálicos

April 7, 2014

Forward-Looking Statements

Statements in this presentation concerning the Company's business outlook or future economic performances, anticipated profitability, revenues, expenses, or other financial items, anticipated cost synergies and product or service line growth, together with other statements that are not historical facts, are "forward-looking statements" as the term is defined under Federal Securities Laws.

Any forward-looking statements are estimates, reflecting the best judgment of SQM based on currently available information and involve a number of risks, uncertainties and other factors that could cause actual results to differ materially from those stated in such statements.

Risks, uncertainties, and factors that could affect the accuracy of such forward-looking statements are identified in the public filing made with the Securities and Exchange Commission, and forward-looking statements should be considered in light of those factors.

Who we are

- Chilean non-metallic mining company, dating back to 1900
- World's #1 producer of:
 - ✓ Iodine, 28% global market share⁽¹⁾
 - ✓ Lithium chemicals 27% global market share⁽¹⁾
 - ✓ Potassium nitrate 48% global market share⁽¹⁾
- Turnover (LTM): US\$ 2.3B⁽²⁾
- Listed in New York and Santiago Stock Exchanges
- Market Cap: US\$ 8.1 B⁽³⁾
- Sales offices in over 19 countries, directs sales in 110 countries

(1) Market share measured by volume, SQM estimation for 2013

(2) Estimated revenues for LTM

(3) Market Cap as of **March 4, 2014**

SQM Overview

Natural Resources



Caliche Ore

Nitrates

Iodine

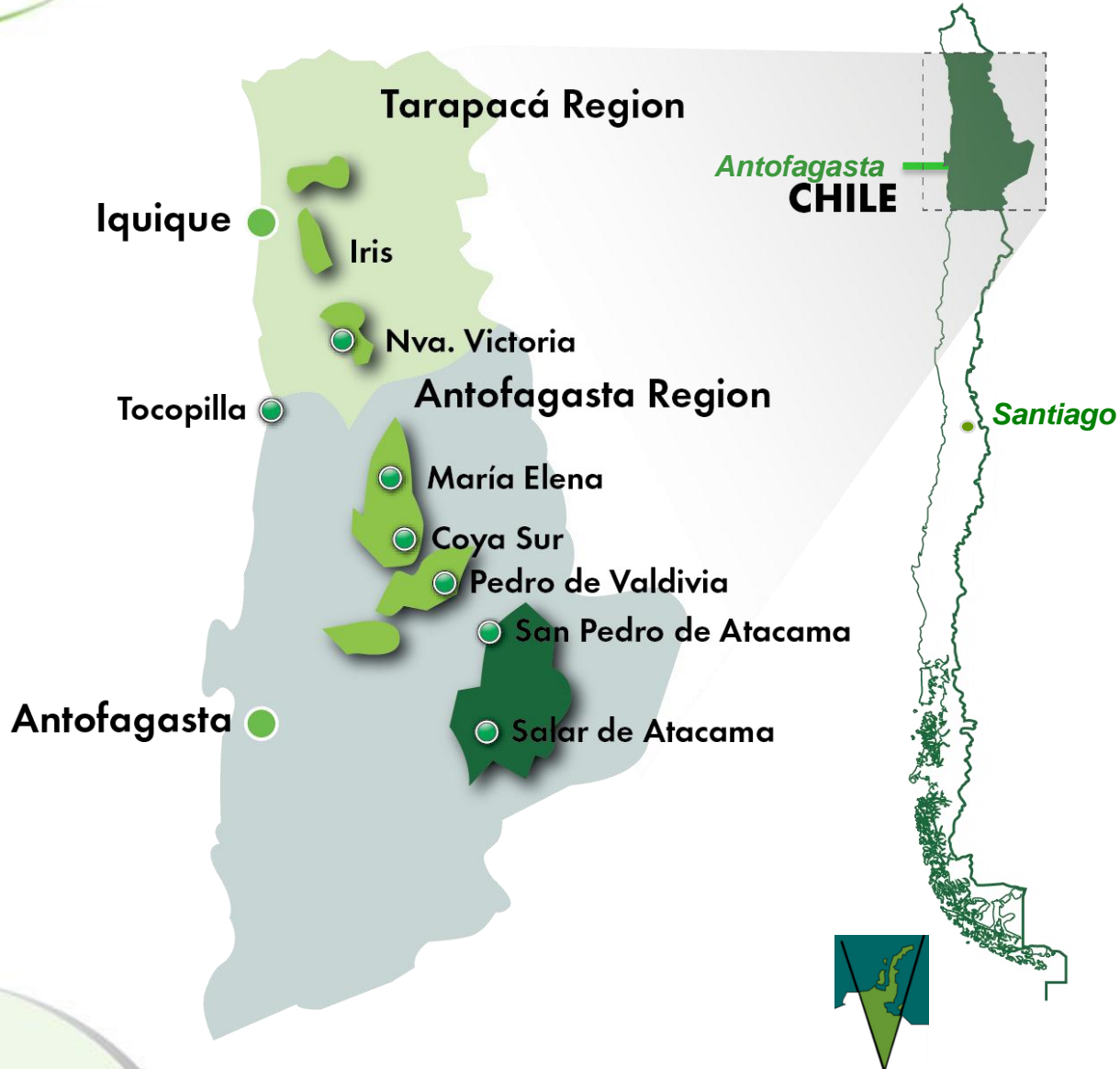


Salar Brines

Potassium

Lithium

SQM Operations



Exploration for Metals

- SQM's caliche areas are located in productive and prospective metallogenic belts for copper and gold-silver
 - Caliche is a surficial mineral that is generally located less than 10 meters below the topographic surface



To continue exploration for metals beneath the caliche layer

1: Exploration by SQM

2: Invite partners with experience in metals exploration to complement and advance SQMs exploration success

Metal Exploration by SQM

- SQM discovered and explored the Antucoya copper deposit between 1998-2005
- SQM re-initiated in 2008 a metals exploration program
- Between 2008 & 2013 SQM has invested ~MUS\$40 in exploration
- Starting with basic exploration SQM has identified more than 50 areas with metal mineralization
- SQM has further explored the most attractive areas and defined pre-projects and projects
- The current status of these areas is diverse:
 - ✓ *Under exploration by SQM*
 - ✓ *In exploration contracts with third parties*
 - ✓ *Available for exploration by partners*

**SQM
Mining
Property**

**Early Stage
SQMs
Exploration**

**Advanced
Projects SQMs
Exploration**

**PFS Stage
Projects**

**Early Stage
3rd Parties
Exploration**

**Advanced
Projects 3rd
Parties
Exploration**

Stages of Exploration

1. Basic Exploration

- ✓ Data compilation
- ✓ Geologic mapping (scale 1:20 000)
- ✓ Date review of nitrate operations data sets (regular grid)
- ✓ Geochemical sampling (rocks, soils)

2. Area of Interest

- ✓ Geologic mapping (scale 1:5000)
- ✓ Geochemical sampling (regular grid)
- ✓ Trenches (outcrop generation)
- ✓ Scout drilling (top of bedrock)

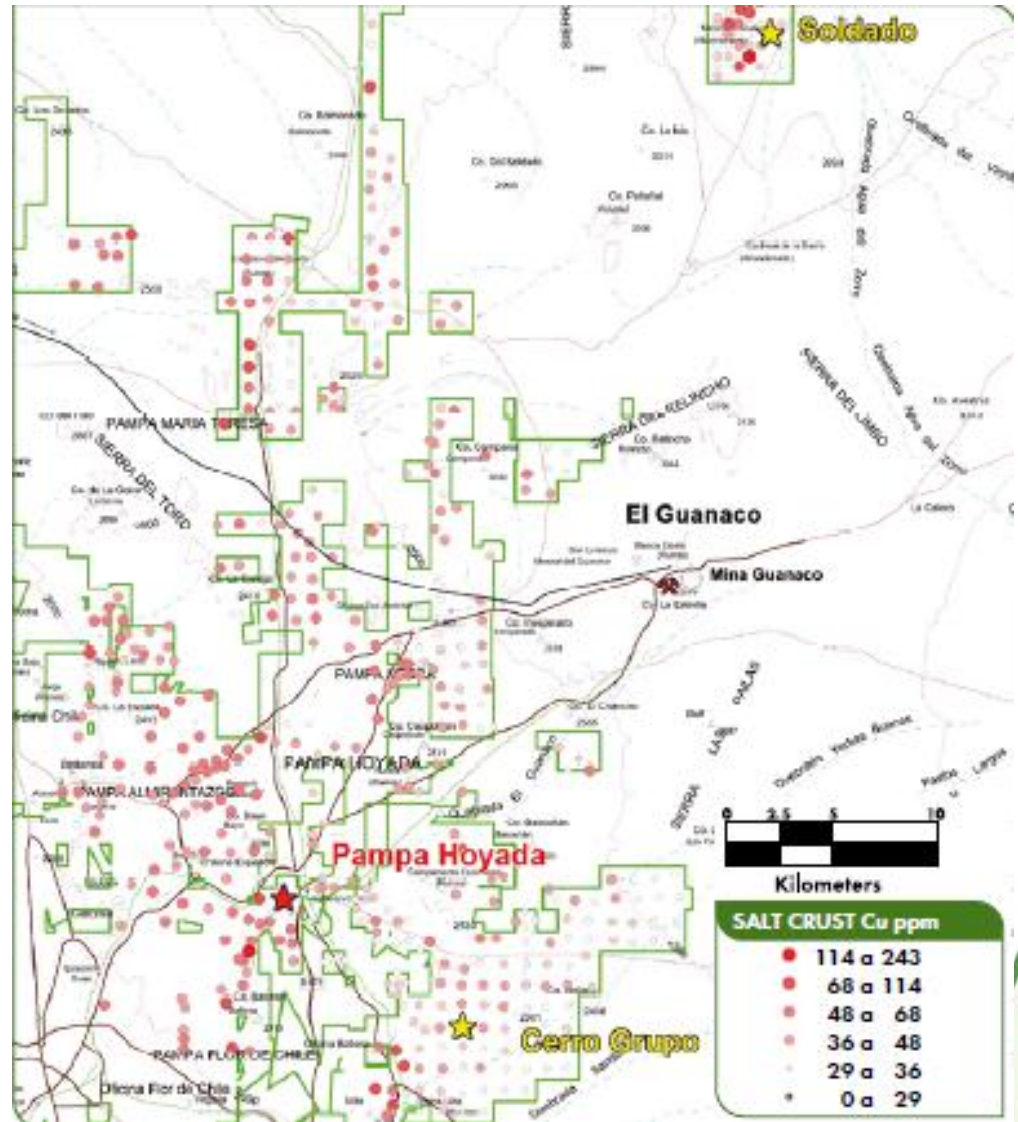
3. Pre-Project

- ✓ Geophysical studies
- ✓ Petrographic studies, PIMA/TerraSpec
- ✓ Geochemical sampling (grid infill)
- ✓ Additional trenches
- ✓ Drilling AR/DDH ~ 3000 m

4. Project

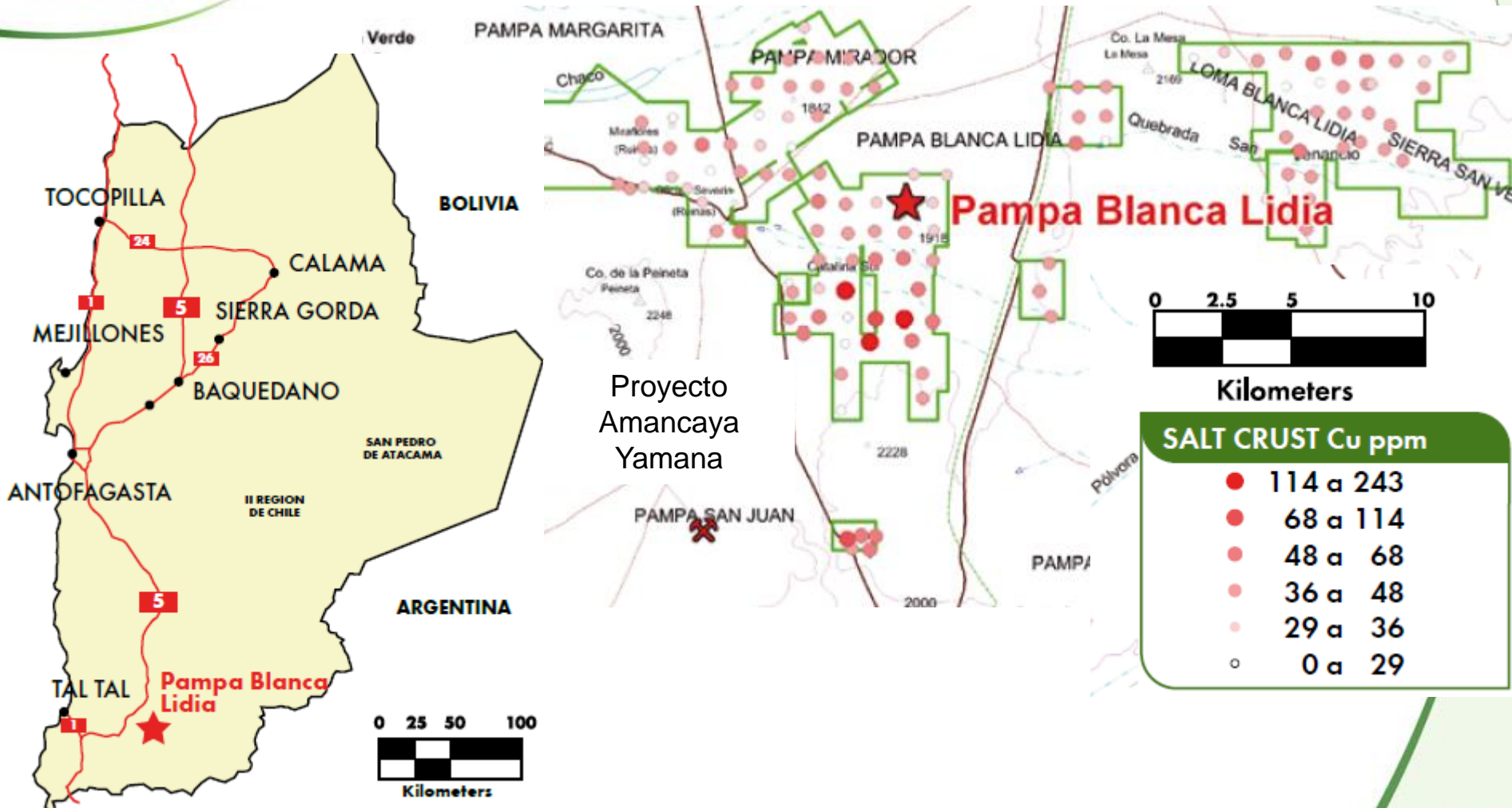
- ✓ Geological mapping (scale 1:2000)
- ✓ Geophysical studies
- ✓ Drilling up to 8000m (Cu)
- ✓ Drilling up to 30000m (Au)
- ✓ Resource estimation; PEA

Basic Exploration – Sector Guanaco



Gold and silver potential in the Paleocene belt

Basic Exploration– Pampa Blanca Lidia



Gold and silver potential in the Paleocene belt

Stages of Exploration

1. Basic Exploration

- ✓ Data compilation
- ✓ Geologic mapping (scale 1:20 000)
- ✓ Date review of nitrate operations data sets (regular grid)
- ✓ Geochemical sampling (rocks, soils)

2. Area of Interest

- ✓ Geologic mapping (scale 1:5000)
- ✓ Geochemical sampling (regular grid)
- ✓ Trenches (outcrop generation)
- ✓ Scout drilling (top of bedrock)

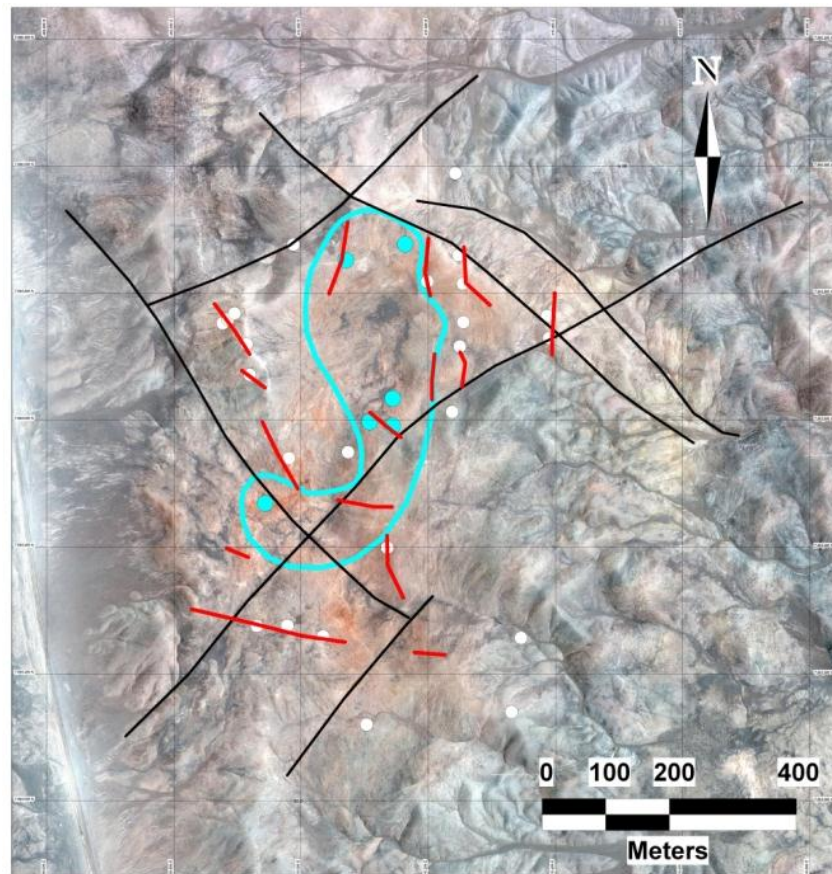
3. Pre-Project






- ✓ Geophysical studies
- ✓ Petrographic studies, PIMA/TerraSpec
- ✓ Geochemical sampling (grid infill)
- ✓ Additional trenches
- ✓ Drilling AR/DDH ~ 3000 m

4. Project

- ✓ Geological mapping (scale 1:2000)
- ✓ Geophysical studies
- ✓ Drilling up to 8000m (Cu)
- ✓ Drilling up to 30000m (Au)
- ✓ Resource estimation; PEA

Area of Interest – Cerro Gentil



-  TRENCHES
-  MAJOR FAULTS
-  GEOCHEMICAL SAMPLES <250 ppm Cu
-  GEOCHEMICAL SAMPLES >250 ppm Cu
-  Cu ANOMALY >250 ppm IN HYDROTHERMAL ALTERATION

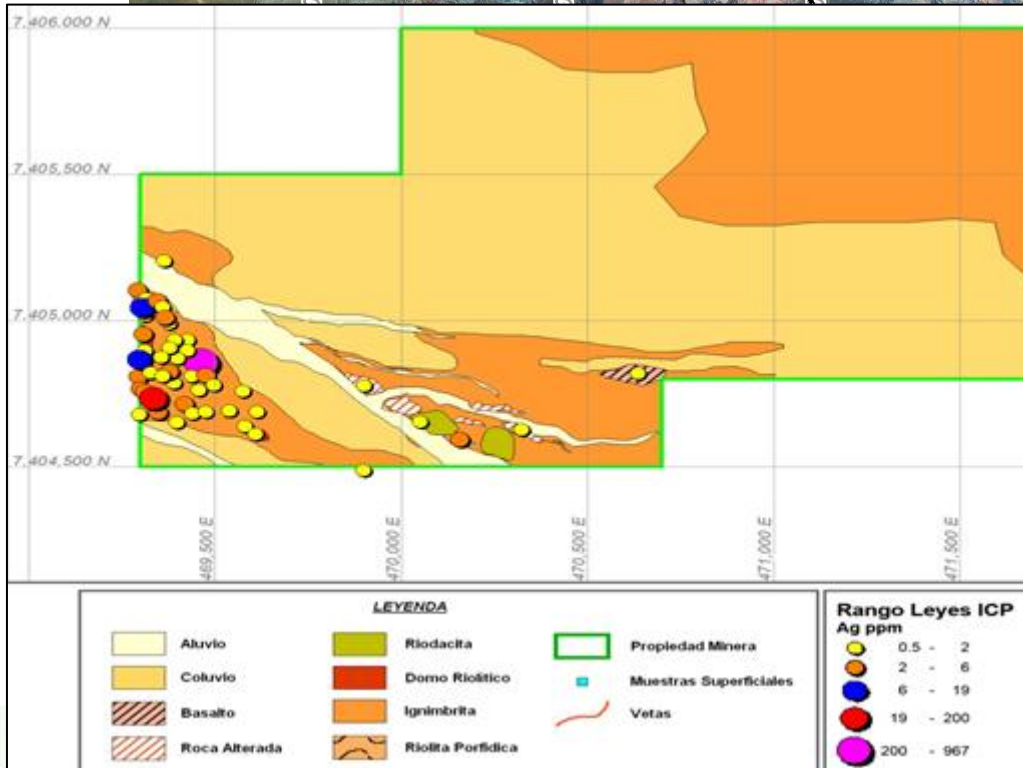
Areas of Interest – KM60



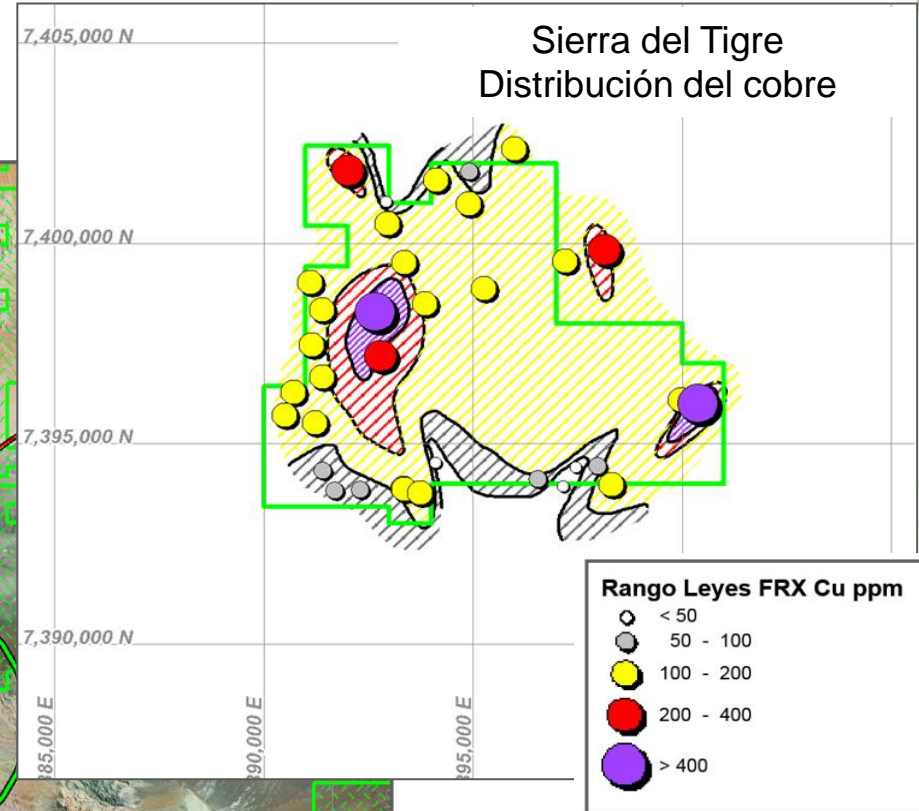
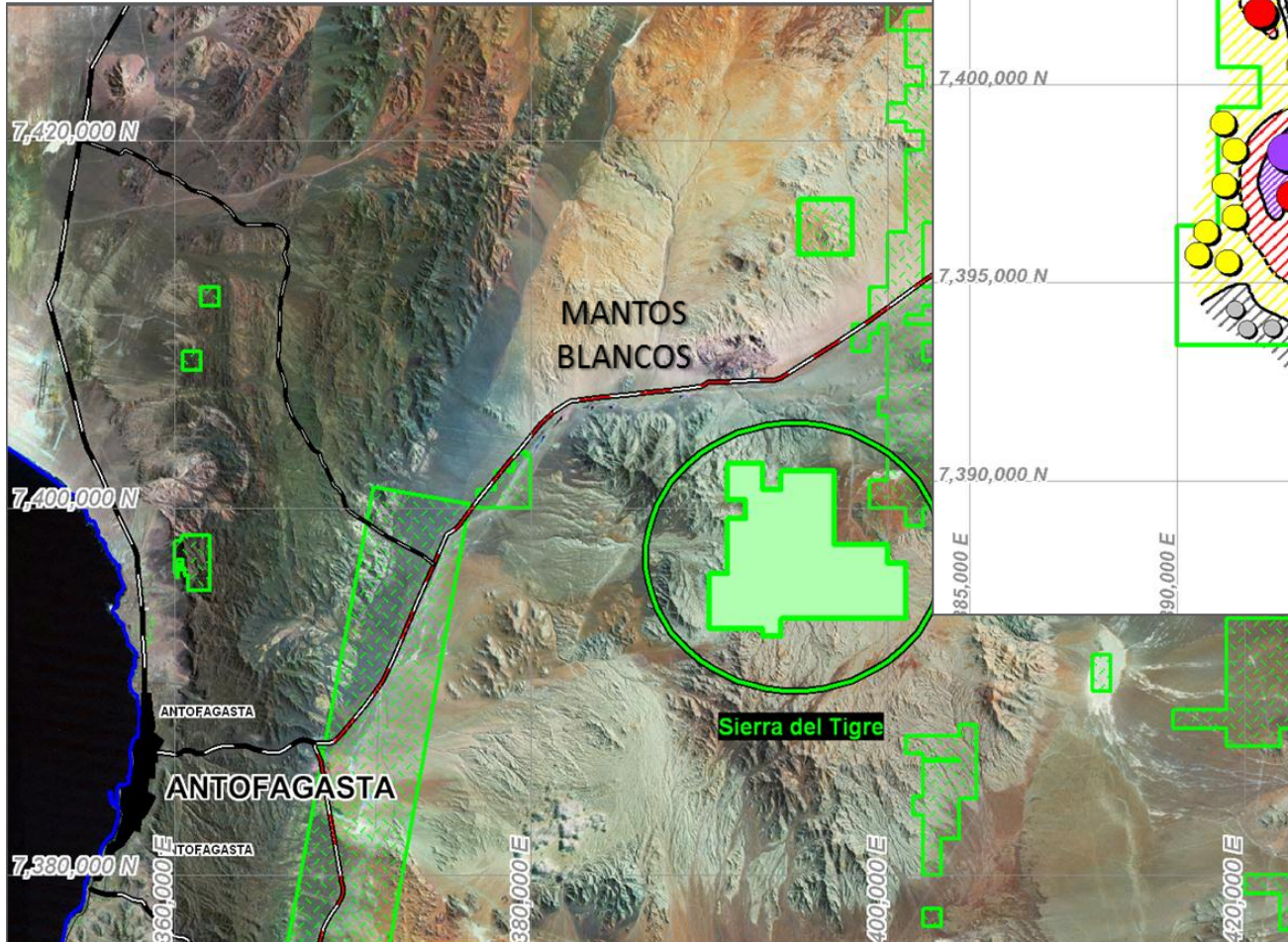
Domo riolítico, borde rocas piroclásticas



Anomalía de Ag y Pb



Area of Interest – Sierra del Tigre



Stages of Exploration

1. Basic Exploration

- ✓ Data compilation
- ✓ Geologic mapping (scale 1:20 000)
- ✓ Date review of nitrate operations data sets (regular grid)
- ✓ Geochemical sampling (rocks, soils)

2. Area of Interest

- ✓ Geologic mapping (scale 1:5000)
- ✓ Geochemical sampling (regular grid)
- ✓ Trenches (outcrop generation)
- ✓ Scout drilling (top of bedrock)

3. Pre-Project

- ✓ Geophysical studies
- ✓ Petrographic studies, PIMA/TerraSpec
- ✓ Geochemical sampling (grid infill)
- ✓ Additional trenches
- ✓ Drilling AR/DDH ~ 3000 m

4. Project

- ✓ Geological mapping (scale 1:2000)
- ✓ Geophysical studies
- ✓ Drilling up to 8000m (Cu)
- ✓ Drilling up to 30000m (Au)
- ✓ Resource estimation; PEA

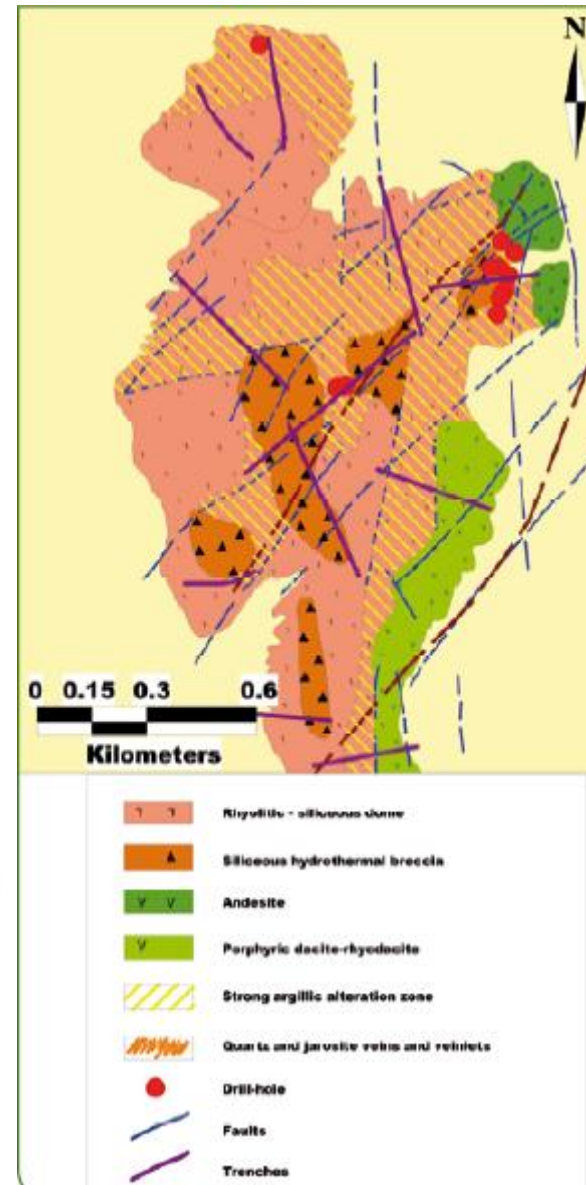
Pre - Project – Cerro Tostado

Target: Epithermal veins (Au Ag)

- 82 geochemical samples (grid 200m)
- 12 trenches (50m spacing)
- 478 channel samples
- 12 drillholes RC (max 200m)

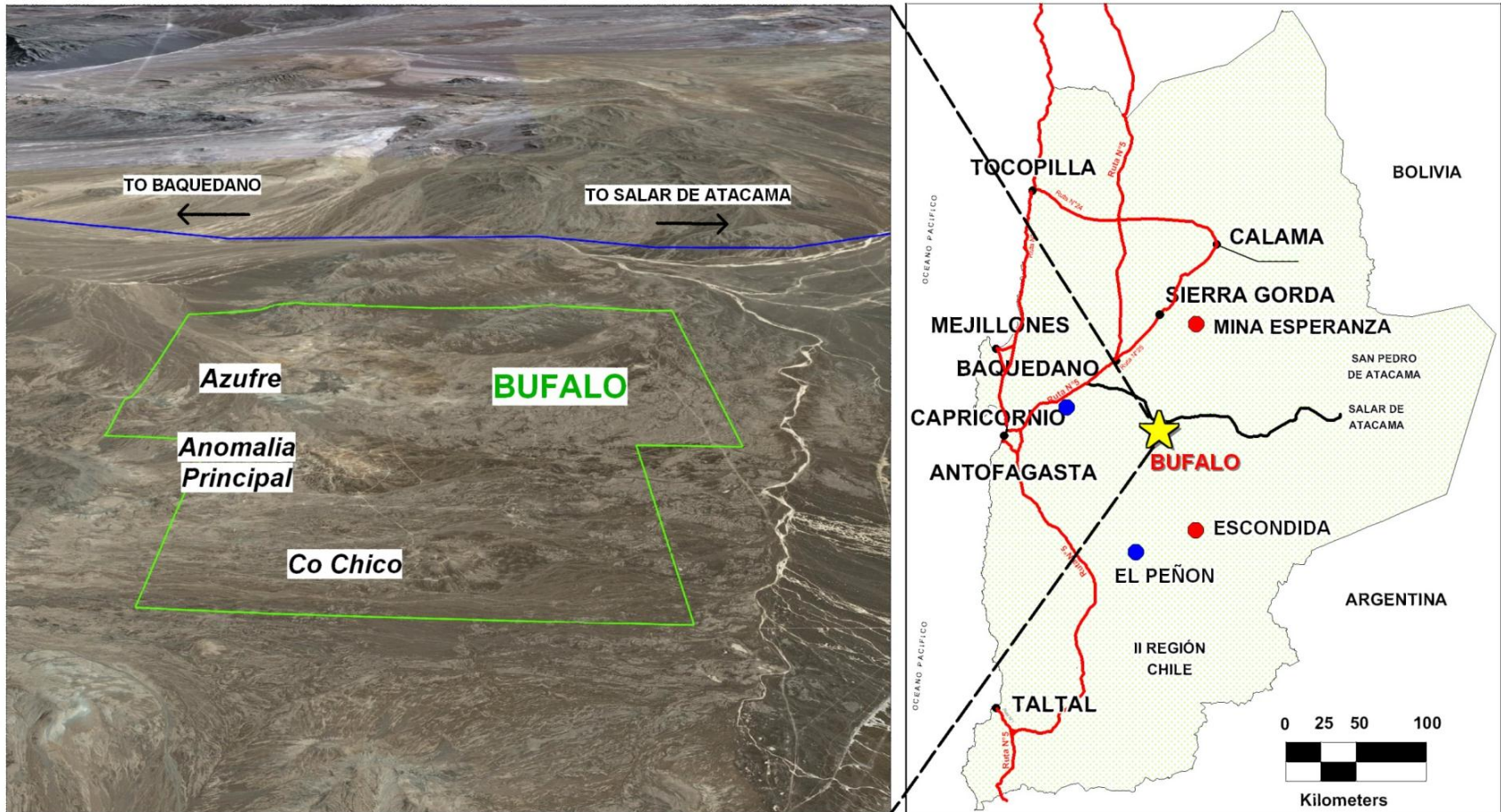


Pre - Project – Cerro Tostado



Geochemical anomalies +3 g/t Ag, 30 ppb Au
Up to 1580 g/t Ag in drillholes

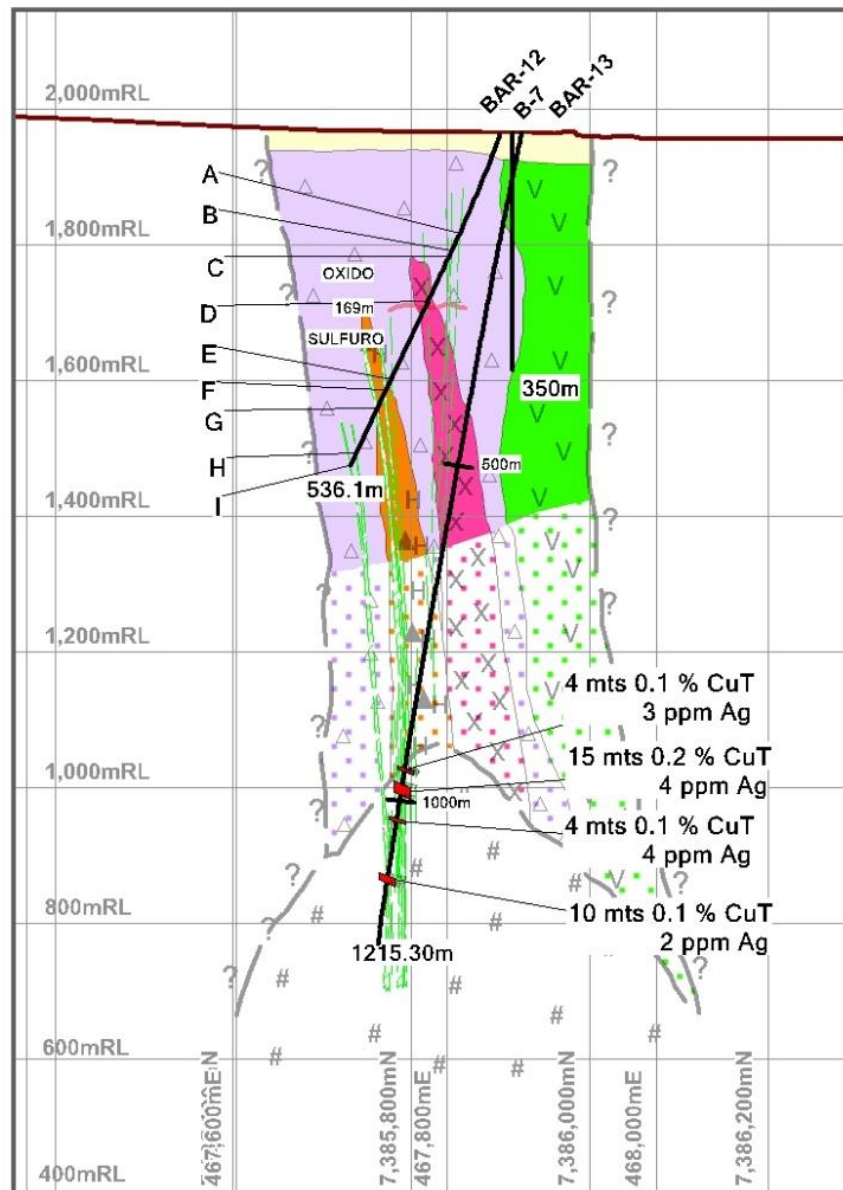
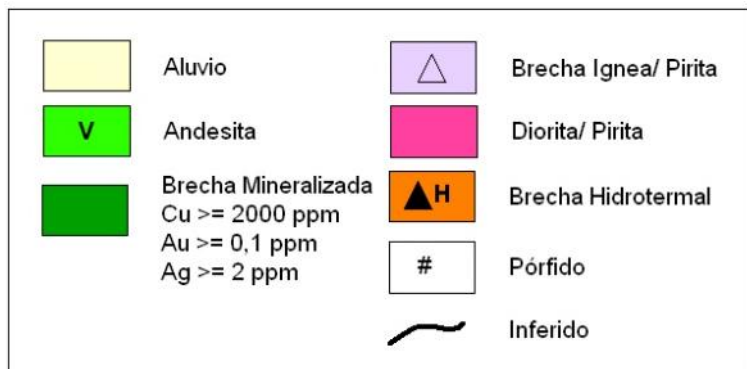
Pre – Project - Búfalo



114 km east of Antofagasta, 65 km SE of Baquedano & 80 km SW of the Esperanza project (ANTO).

Pre – Project - Búfalo

SONDAJE	TRAMOS MINERALIZADOS (m)	Intercepto (m)	Cu (ppm)	Au (ppm)	Ag (ppm)	Fe (%)	
BAR-12	A	157-160	639	0.06	8	8.0	
	B	184-189	3397	0.06	29	8.7	
	C	193-195	2	1611	0.03	6	7.9
	D	267-268	1	744	0.02	11	8.0
	E	390-394	4	318	0.03	4	5.4
	F	412-419	7	2302	0.05	7	3.4
	G	440-445	5	2290	0.21	13	7.0
	H	514-515	1	2508	0.06	3	2.7
	I	535-536	1	2000	0.36	8	4.2



Geology, magnetometry,
IP/chargeability, drilling, petrography

Stages of Exploration

1. Basic Exploration

- ✓ Data compilation
- ✓ Geologic mapping (scale 1:20 000)
- ✓ Date review of nitrate operations data sets (regular grid)
- ✓ Geochemical sampling (rocks, soils)

2. Area of Interest

- ✓ Geologic mapping (scale 1:5000)
- ✓ Geochemical sampling (regular grid)
- ✓ Trenches (outcrop generation)
- ✓ Scout drilling (top of bedrock)

3. Pre-Project

- ✓ Geophysical studies
- ✓ Petrographic studies, PIMA/TerraSpec
- ✓ Geochemical sampling (grid infill)
- ✓ Additional trenches
- ✓ Drilling AR/DDH ~ 3000 m

4. Project

- ✓ Geological mapping (scale 1:2000)
- ✓ Geophysical studies
- ✓ Drilling up to 8000m (Cu)
- ✓ Drilling up to 30000m (Au)
- ✓ Resource estimation; PEA



Epithermal veins (Au, Ag)

- Geological mapping
- Structural model
- Trenches and sampling
- Short drill holes RAB y AR cortos (max 125m)

Internal Resource Estimation
(no NI43-101)

5.3Mt @1.15g/t Au
(0.3 cut off grade)

CARE-38 19m@ 3,84 g/t Au
 CARE-06 15m@15,23 g/t Au
 CAD-13-027 10m@ 2,23 g/t Aueq
 Including 4,23 g/t Aueq (from 76m)

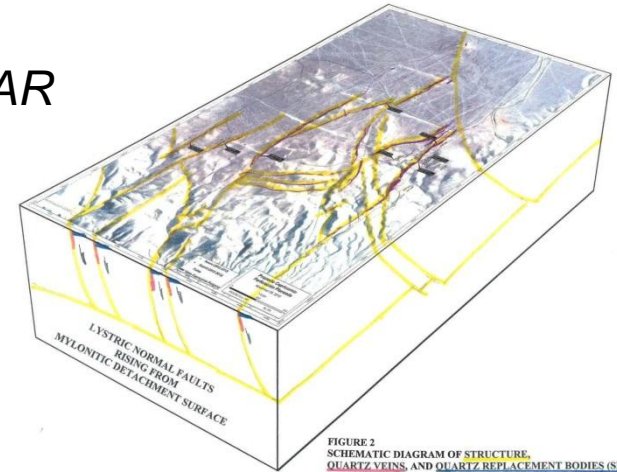
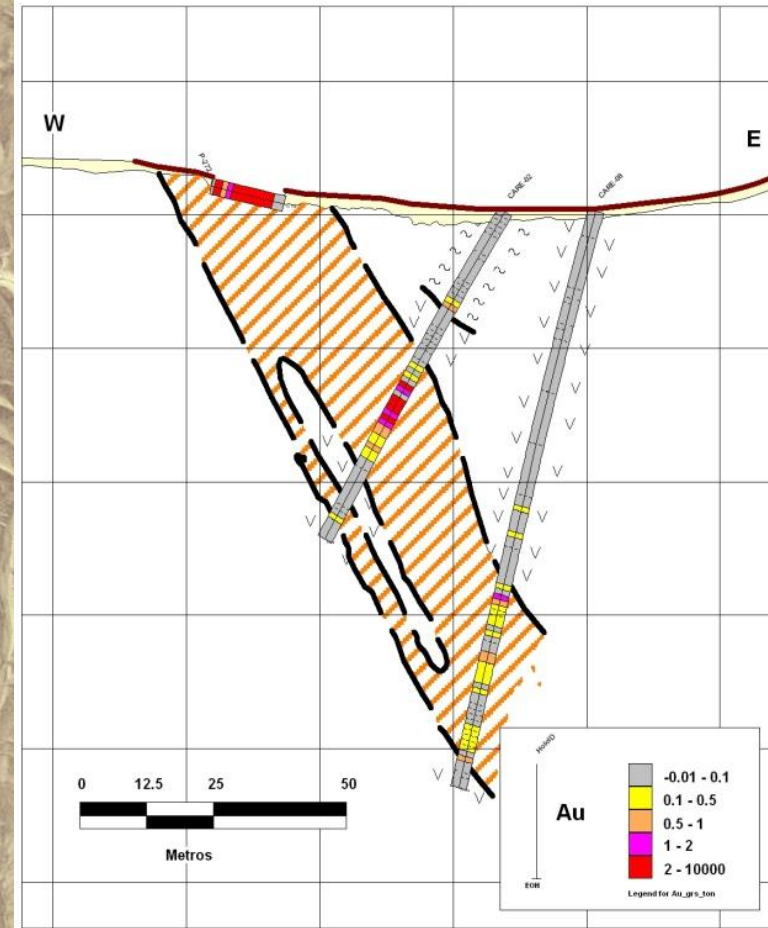
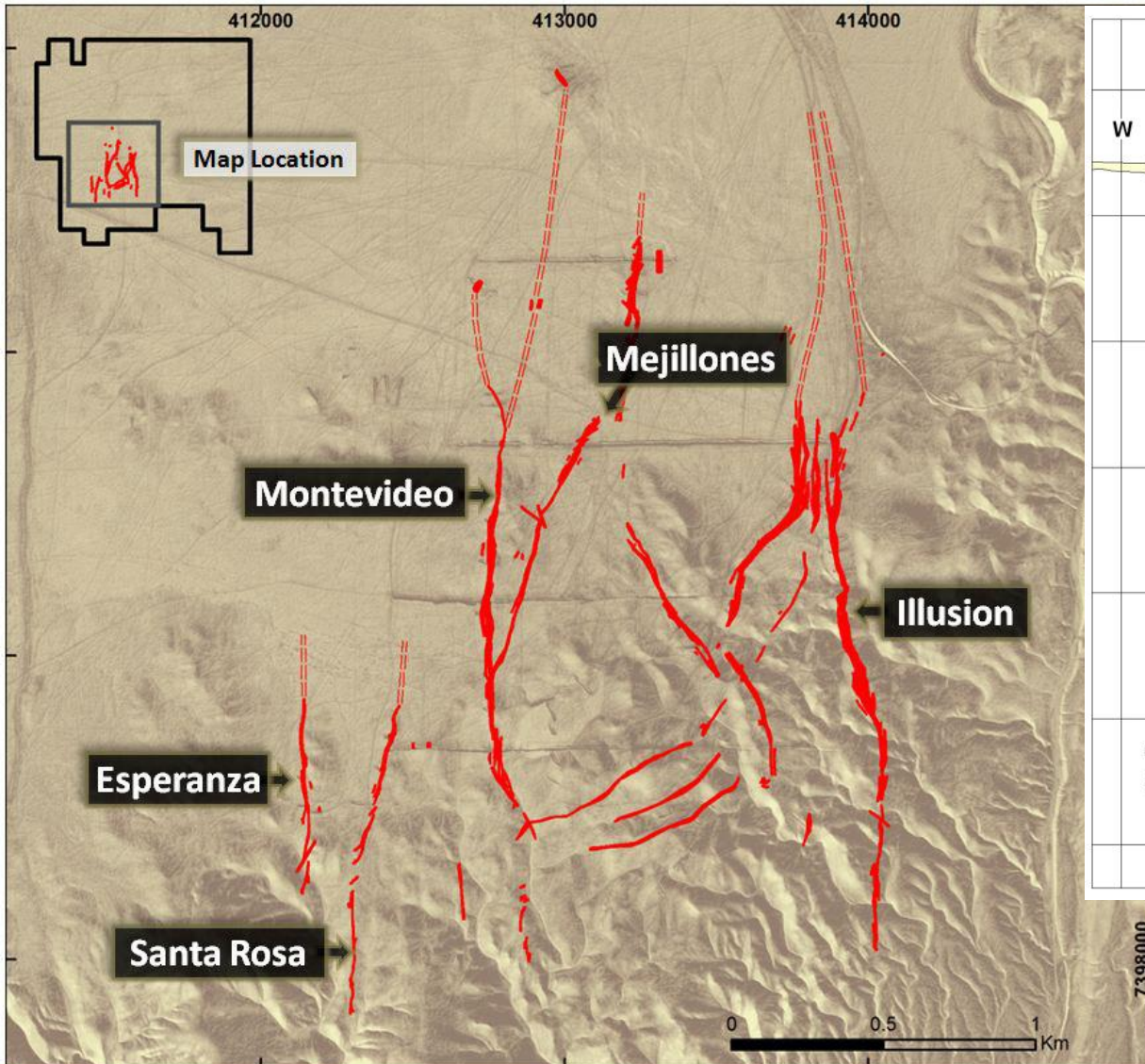
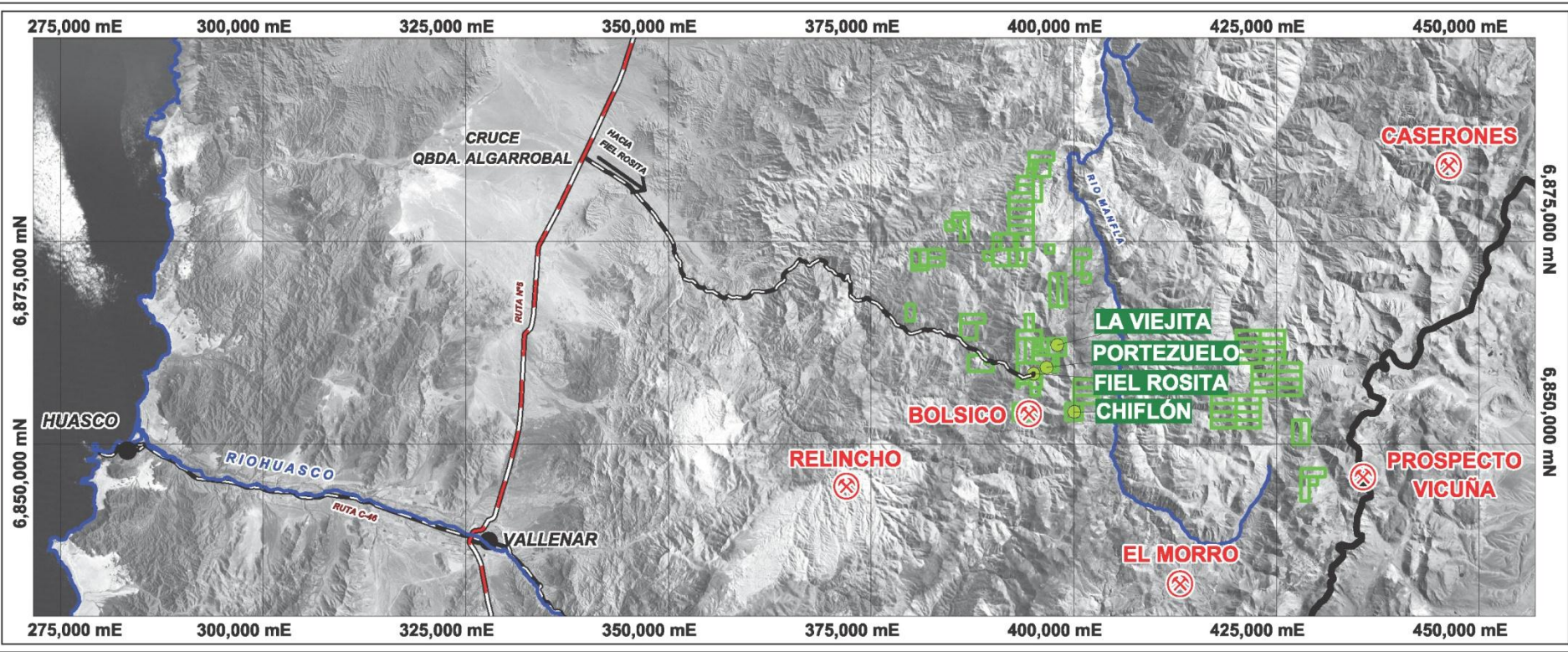


FIGURE 2
SCHEMATIC DIAGRAM OF STRUCTURE,
QUARTZ VEINS, AND QUARTZ REPLACEMENT BODIES (SINTEP)

Project - Capricornio



Project – Fiel Rosita District



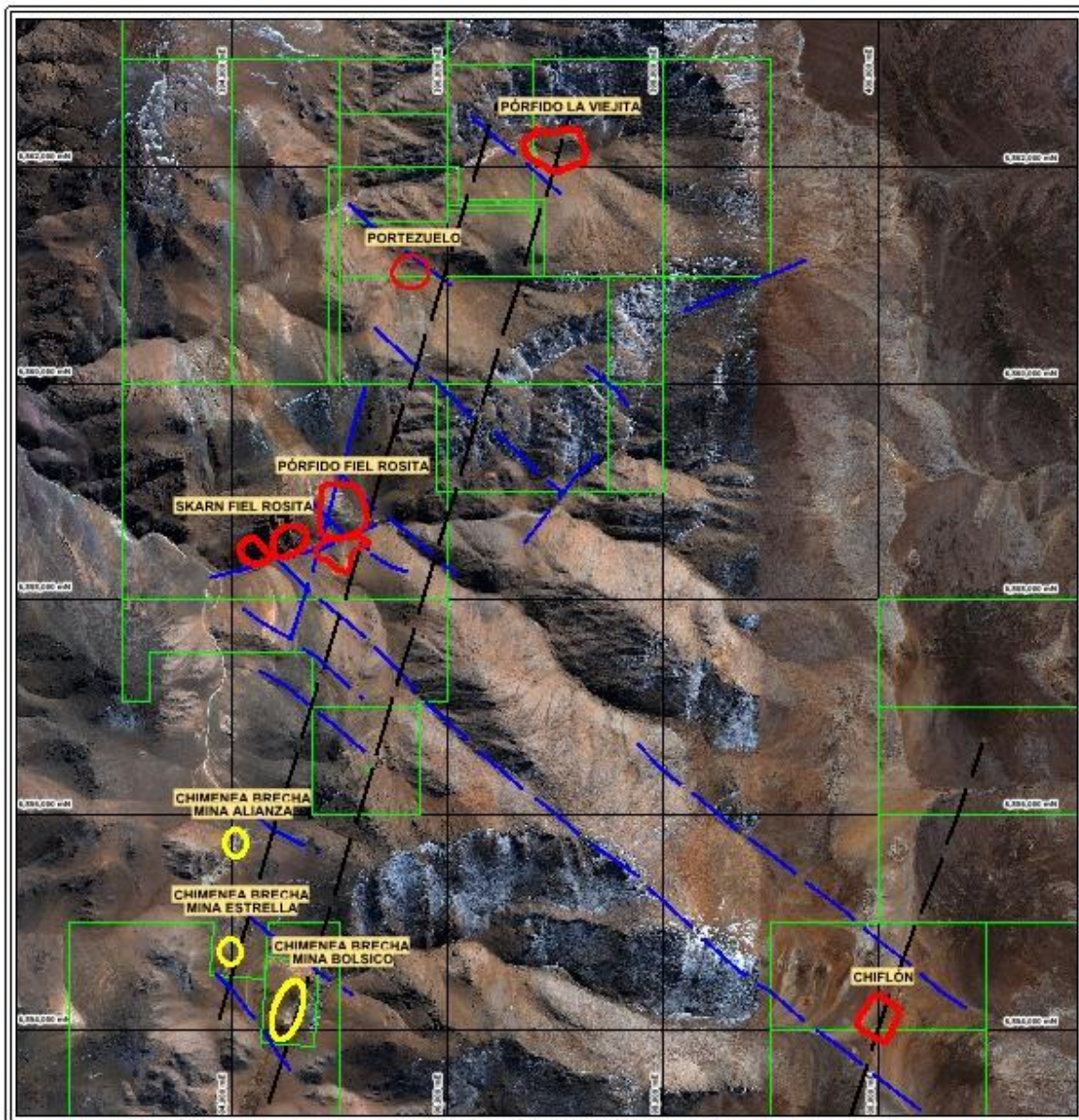
Project – Fiel Rosita District

Geology, geochemical
sampling, magnetometry

Zones of skarn, brecha and
porphyries with potassic
alteration

143 drillholes (40.480m)

Flotation tests (Cu, Mo), Bond
Work Index, SAG power index



Exploration Alliances

Active Agreements: 9; an additional 7 exercised

Areas of interest with the contract areas: +20

Recent partners:

Capstone Mining

Arena Minerals

Estrella Resources

Endeavour Silver

A projected exploration expenditure of approximately US\$150m to be spent on SQM concessions over the next 5 to 7 years

Entry Point to Chile

- **Our Invitation to you:**
 - ✓ Important prospects already identified
 - ✓ Important territory left to be explored!
- **We are looking for strategic partners to help us:**
 - ✓ Advance our Greenfield exploration programs
 - ✓ Mature the prospects already identified
- ***Strong mineral potential, strong local mining partner, stable political environment***

Discovering metals underneath caliche covered areas

Darryl Lindsay, PhD, PGeo
Gerente de Desarrollo de Negocios Metálicos

April 7, 2014